



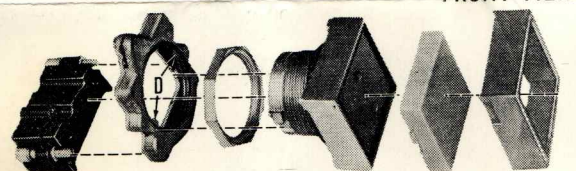
PUSHBUTTON OPERATORS

The push button operator in this package consists of an adapter, retaining nut and locking ring. The operator is functional with the addition of other parts shown below which are ordered and packaged separately.

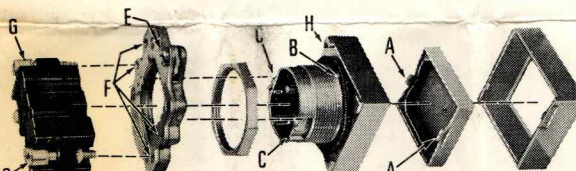
The instructions, exploded views, and sketches below are intended as a guide for assembling complete pushbutton operators to the panel.

- (1) Remove locking ring from adapter by turning locking screw "E" counter-clockwise. Remove retaining nut. Adapter nib "B" engages notch in panel mounting hole. Thread retaining nut onto adapter rear extension. When required, assemble legend plate by engaging the notch on each end of ring with nibs "H" on adapter. Assemble locking plate, turn screw "E" clockwise to engage and lock nibs "D" in slots "C".
- (2) Contact block assembles to locking ring with two screws "G" threading into holes "F".
- (3) Buttons snap in place on the push plate in the adapter. **IMPORTANT:** When assembling buttons, allow the push plate to reach the bottom of its stroke. If the push pin is held against a solid object, the plate and pin may become permanently distorted. An audible snap will indicate the button is securely in place. Large single button shown snaps into place with ears "A" 90° from mounting nib "B". For buttons with markings, orient the marking to nib "B". Do not operate buttons if movement of push rods and plungers is restricted. See special note below.
- (4) Collar snaps on front of panel part of adapter.
- (5) To remove buttons, locate the slots molded in the side of the button and carefully pry loose. NOTE: This slot is visible on buttons manufactured after Feb. 1977.

FRONT VIEW



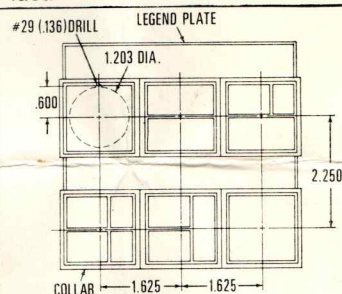
CONTACT BLOCK LOCKING RING RETAINING NUT ADAPTER BUTTON COLLAR



REAR VIEW

SPECIAL NOTE

For operators with dual operation feature the button which provides dual operation when depressed is always assembled last.



PANEL DRILLING & SPACING DIMENSIONS
TYPICAL MOUNTING ARRANGEMENT

CUTLER-HAMMER

Made in U. S. A.

Pub. 13711

277